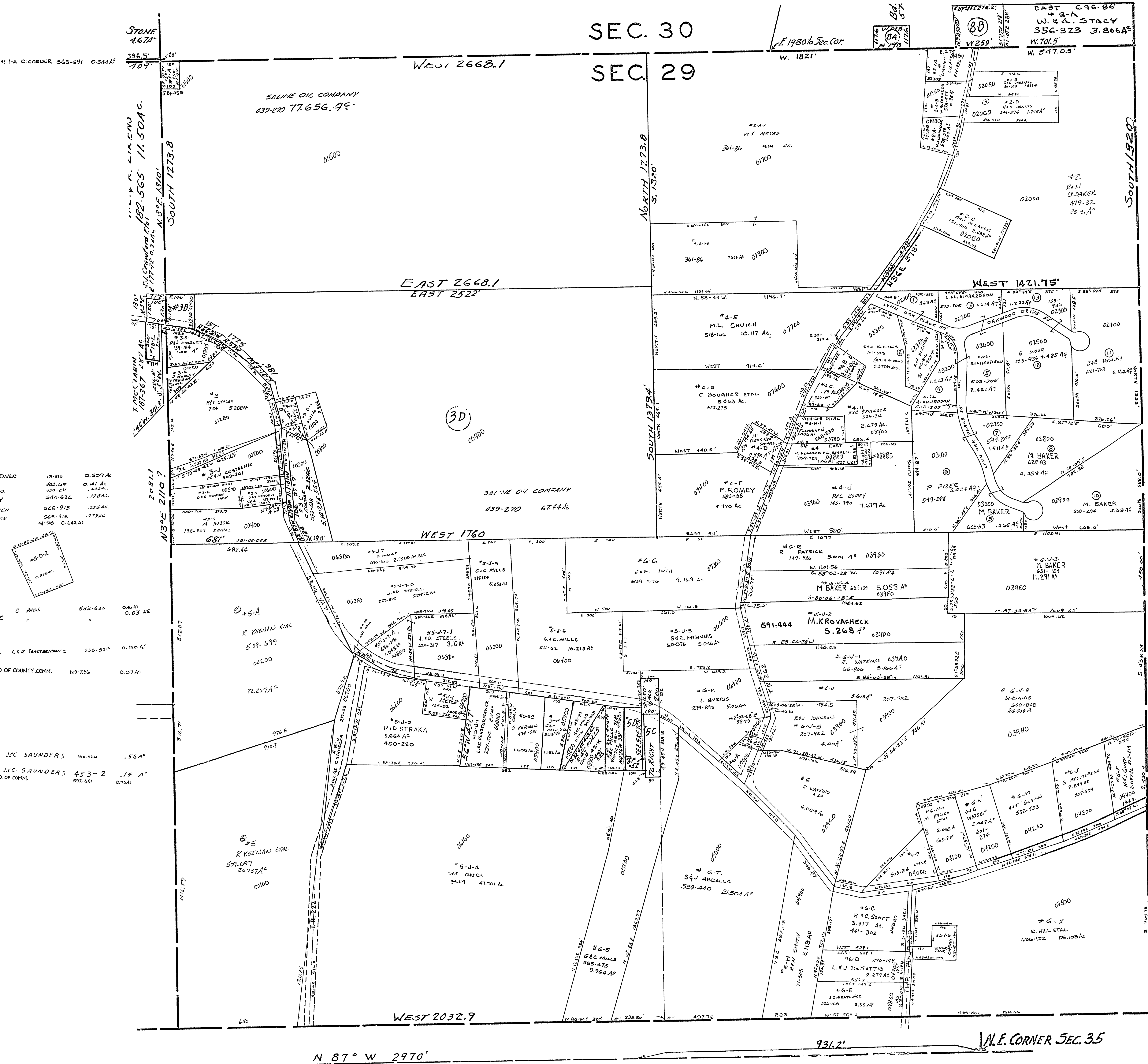


24-2900-

SEC. 30
SEC. 29



#1-B S.D. KLEINER	11-315	0.509 AC.
#3-G J.J. DAVIS	481-64	0.41 AC.
#3-D J. SAUNDERS	450-231	.22 AC.
#3-D-2 DEM. STACY	544-636	.39 AC.
#4-A J.G. FLENNIKEN	625-915	.22 AC.
#4-C J. FLENNIKEN	565-915	.77 AC.
#3-B D. STACY	4150	0.642 AC.

#5-B C. PAGE	532-630	0.63 AC.
#5-C		
#5-H-2 L.E. FENTON	238-504	0.150 AC.
#3-A BD. OF COUNTY COMM.	119-236	0.07 AC.
#6-A J.C. SAUNDERS	310-324	.56 AC.
#6-B J.C. SAUNDERS	453-2	.14 AC.
#4-B BD. OF COMM.	592-481	0.34 AC.

SEVEN OAKS SD

NOTE: S.D. DOES NOT EXIST TAKEN UP BY LELAND & SAUNDERS TRACTS

W.R. THOMPSON TRACT
S.W. 1/4 SEC. 29

SALEM TOWNSHIP
SECTION 29, TWP. 10, RANGE. 3.
SCALE 1"=200' 1958

